

It's A Dog's Life Apron

Designed by Phyllis Dobbs



This apron is shown in two easy-to-make color combinations. The appliqué bird and bones can be added for decorative accents. These aprons are created with *It's a Dog's Life* fabrics designed by Phyllis Dobbs for Quilting Treasures, by Cranston Printworks.

Website – www.phyllisdobbs.com/ (fabrics designed by Phyllis plus art images, products, publications and quilt designs)

Blog – www.phyllisdobbs.info (additional patterns for aprons and quilts plus discussions on sewing, fabrics, quilting, designing, art licensing and much more)

Size: Width - 27", Height – 31" (size can be adjusted – see instructions at bottom)

Materials:

1 Dog block top for top pocket
2/3 yard – Bone fabric (Fuchsia or Blue) for apron top
1/3 yard – Yellow bird print or green dog print for apron bottom

¼ yard – Green paw print tonal fabric for appliqué or pocket
1/3 yard – Pink dog print or light blue dog word print for ties and lining of block pocket

For appliqué:

Fusible Web*
¼" round bead
Thread to match the appliqué fabric pieces

Optional:

Cutting Mat
Rotary Cutter

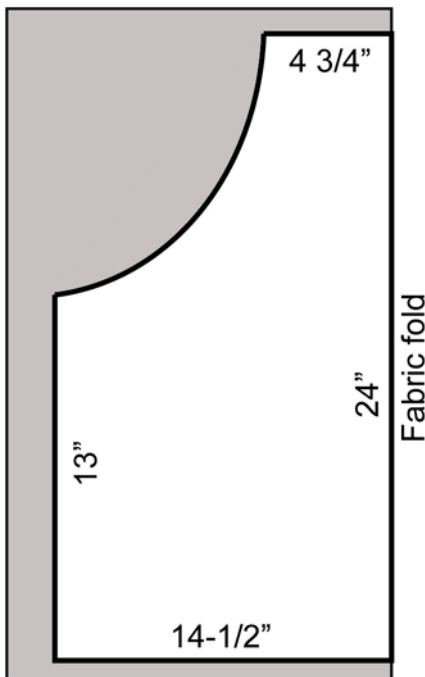
*Steam a Seam II by The Warm Company used for the model.

<http://www.warmcompany.com/>

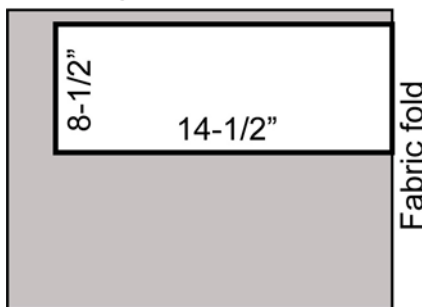
Cutting:

1. Cut 1 of apron top and 1 of apron bottom. Be sure to place fabric on a fold.

Apron Top



Apron bottom



2. For the facing, cut 1 piece 2 1/2" x 9 1/2" from the same fabric as the apron top.

3. For the neck ties, cut 1 piece from the same fabric as the bottom and 1 piece from the fabric used for lining the top pocket – size 2 1/2" x 19".

4. For the waist ties, cut 1 piece from the same fabric as the bottom and 1 piece from the fabric used for lining the top pocket – size 2 1/2" x 22"

5. For the smaller pocket, cut 1 piece 5 1/2" x 10 1/2".

6. For the appliqué pieces, follow the instructions of the manufacturer for the fusible web to cut 5 bones and 1 each of the bird and wing.

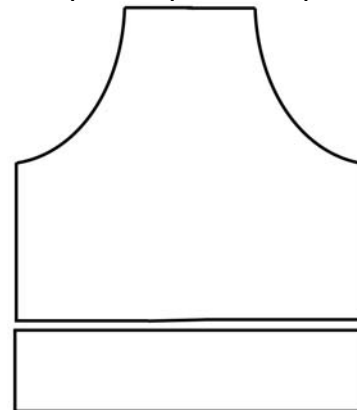
7. Cut the dog block leaving 1/4" of fabric around the outside edge of the block border. Cut 1 piece of the lining the same size.

Sewing Instructions:

General – sew using 1/4" seams. Sew right sides together.

1. Sew the large top pocket. Pin and then sew block right sides together to the lining, leaving a 2" opening along the bottom edge. Turn right side out through the opening, press and slip stitch the opening closed. If the smaller pocket is being used, fold the pocket piece in half, right sides together, to form a pocket 5" x 5". Sew around raw edges, leaving a 2" opening. Turn right side out, press and slip stitch the opening closed.

2. Sew the apron top to the apron bottom.



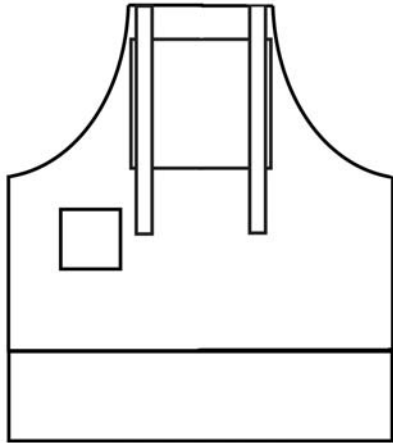
3. Pin the top, dog block pocket centered 3 1/4" below the top edge. Sew around the side and bottom edges. If the smaller

pocket is being used, pin it 5 ¼" from the side edge and 4" below waist (top straight edge).

4. If you are appliquéing, appliqué the dog bones across the bottom edge of the top piece of the apron. Appliqué the bird placed above the top pocket on the left side.

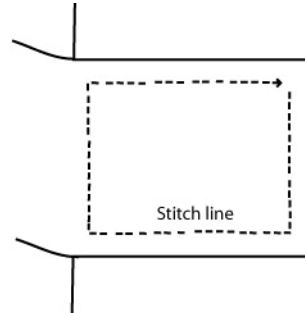
5. Fold each tie piece in half lengthwise, right sides together, and sew the side edge and one end. Turn right side out and press.

5. Pin the open end of the neck ties to the top edge, ½" from the side edges. Pin the facing on top of the ties, right sides together and sew. Press the facing to the back with the ties up.



6. Press a ¼" double hem all the way around the apron and facing and sew. Fold the facing down behind the apron. Top stitch across the top edge of the apron ¼ from the edge and stitching through the apron and the facing.

7. Sew the ties to the waist. Alternate the colors so that the ties at the waist are opposite color from the neck tie on the same side. Fold the open end of the waist ties back and pin to the back side of the apron, pinning at the top of the straight edge of the apron top. Stitch a square to secure ties.



To adjust apron size – To increase or decrease size, add or subtract to the apron top bottom and facing pieces on the side edges. You can increase the apron on the top curved area, but if you are decreasing the size, don't adjust the top edge of the curve by more than ¼". Adjust the facing accordingly.

To increase the length, add to the bottom edge of the apron top. If you are increasing the length by more than 3 inches, you can increase some of this in the bottom section.

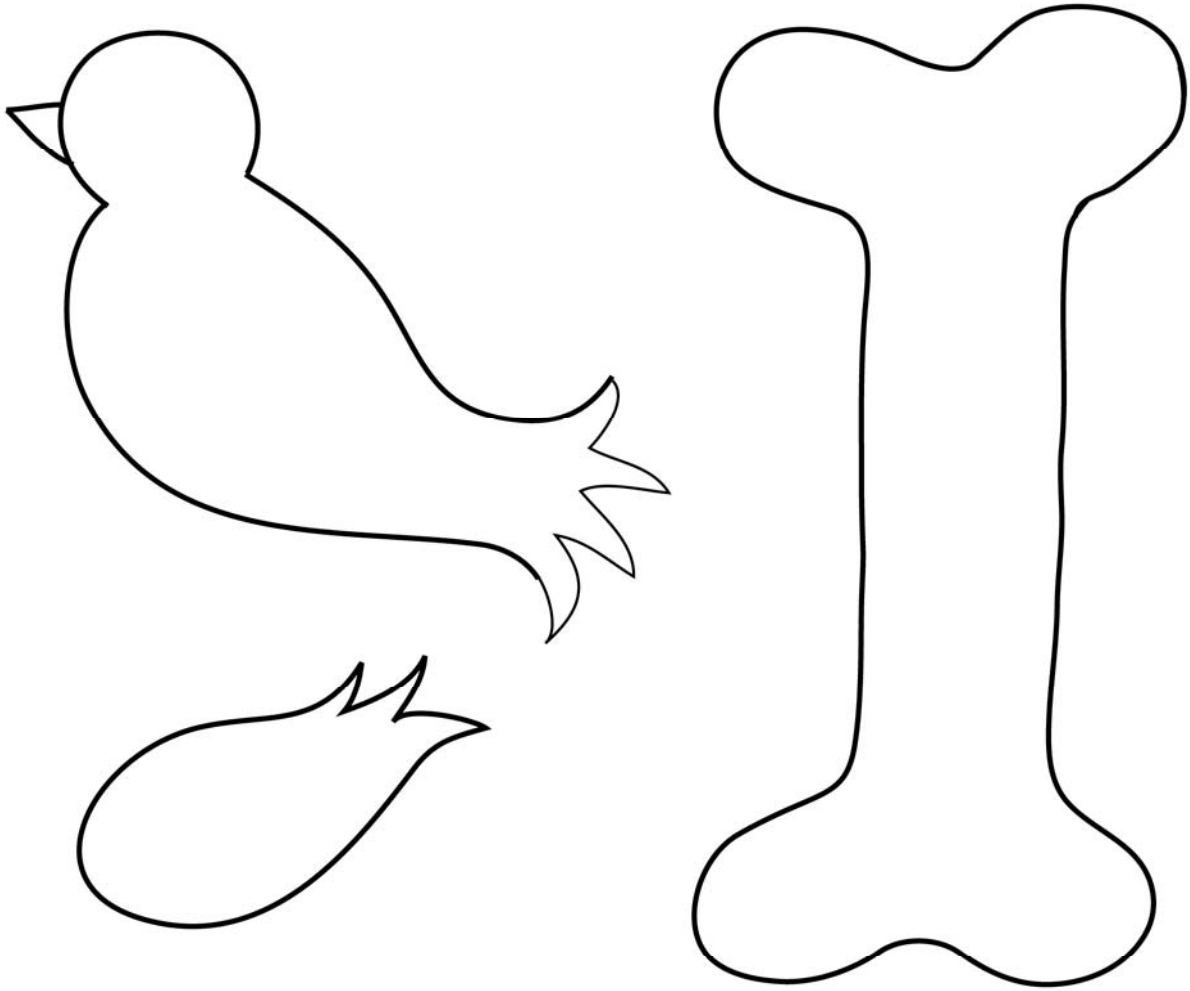
Be sure to have enough fabric for an increased size.

Fabric Source – *It's A Dog's Life* is available through independent fabric and quilt stores. Check with your local stores or online stores. This fabric is manufactured by Quilting Treasures and can be viewed at <http://www.quiltingtreasures.com/content247.html>

Copyright – Phyllis Dobbs

This pattern is created for personal use. It may not be sold or used to create aprons for sale without the written permission of Phyllis Dobbs.

Applique patterns for the *Its A Dog's Life Apron*



Fuse the wing on top of the bird body.

Copyright - Phyllis Dobbs. All rights reserved.